

# EPIX S4U

ELECTRICAL POWERMANAGEMENT  
INTEGRATION EXPERTISE & SERVICES

SMART SUSTAINABLE  
SOLUTIONS FOR A  
GREEN WORLD





# EPIXS4U INTRODUCTION

**"We serve our clients 24 / 7 everywhere!"**

EPIXS4U is a brand independent, state-of-the-art and innovative, multi disciplined product- and system integrator of mechanical-and electrical components. From design and engineering to implementation and after sales. EPIXS4U is a reliable and competent partner for all its customers and stakeholders.



Combining over 50 years of hands-on experience with up to date, in-depth and detailed technical knowledge about multi disciplined system integration with a successful track record, EPIXS4U is able to act as a full-service provider and system integrator of tailor-made, innovative and sustainable technology solutions covering projects in the Rail, Maritime, Industrial and Oil & Gas (On- and Offshore) markets.

We offer our customers a reliable and professional partnership wherever the customer needs us, both national and international, for every electrical-and/or powermanagement and integration project we are ready to support you with our expertise.

EPIXS4U is committed in delivering high levels of technical expertise and maintaining excellent relations with all its stakeholders. With our selected partners we are able to act timely, accurate and cost-effective whereby our 'first time right' philosophy combined with thorough risk assessment and innovative solutions are the key to our customers successful project implementations.



## CONTENT

|                           |       |
|---------------------------|-------|
| INTRODUCTION & VALUES     | 03    |
| OUR MARKETS               | 04    |
| OIL & GAS                 | 05    |
| ENERGY                    | 06-07 |
| RAIL                      | 08-09 |
| INDUSTRY                  | 10    |
| MARINE                    | 11    |
| LED MARINE                | 12    |
| LED HAZARDOUS ENVIRONMENT | 13    |
| PRODUCTION FACILITY       | 14-15 |
| CONTACT INFORMATION       | 16    |

## OUR VALUES

- X INTEGRITY**  
Do what is right and do what we promiss: Reliability.
- X DYNAMIC**  
Communicative, innovative, speed, decisive, enthusiastic, creative and proactive.
- X DELIVERING SUPERIOR RESULTS**  
Exceed customer expectations: first time right attitude.
- X INNOVATION**  
Applied creativity to make a difference.
- X CORPORATE RESPONSIBILITY**  
Serve and improve the communities we live in.
- X CONNECTING**  
We speak the same language as our customers and partners. Transparency in process and in communications. From regional to global 'dedicated'.



EPIXs4U provides durable and dependable multi-disciplined innovative solutions and designs for all areas of the markets and products below. From marine to Industrial to Energy to Oil & Gas to LED to Rail, we are there to support you 24/7.

EPIXs4U is your reliable partner in designing and producing custom build, brand independent On-Offshore packages according to the specific quality and safety directives for On-Offshore Industry.

### MARINE

- Propulsion lines
- Generatorsets
- Compressor Units
- Cooling systems
- Exhaust systems
- Ventilation systems
- Navigation / Communication
- LED solutions
- Shore-Power Solutions

### OIL & GAS

- Drilling Units
- Well servicing Units
- Compressor units – open or containerized
- Generator Sets – open or containerized
- ATEX / Zone 0, 1 and 2 certification possible
- NORSOK certification possible
- Ex-proof LED armatures ATEX / Zone 0, 1 and 2 certified (offices and sites)

### INDUSTRY

- PowerPacks - open or containerized
- HydroPacks - open or containerized
- Pump Units - open or containerized
- Compressor Units - open or containerized
- ATEX / Zone 0, 1 and 2 certification possible
- Cooling Systems
- Instrumentation / Controls
- Exhaust Systems
- Ventilations Systems
- LED Ex-proof and non Ex-proof armatures / Fixtures (offices and sites)

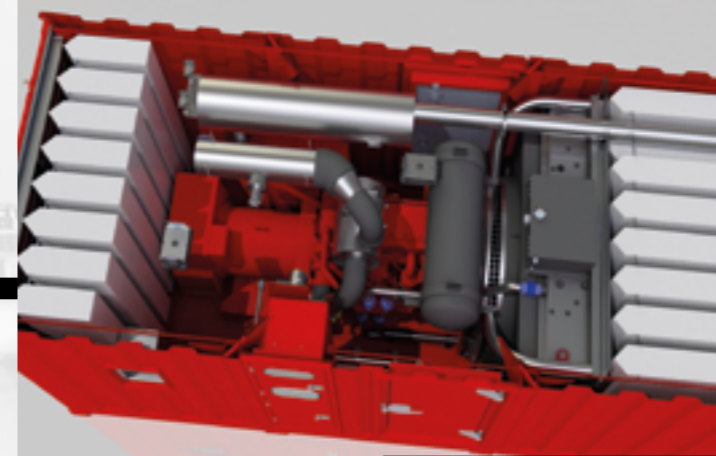
### RAIL

- Railpacks
- Powerpacks
- Generator Sets (main and auxiliary)
- Cooling systems
- Exhaust systems
- Ventilation systems
- LED Ex-proof and non Ex-proof armatures / Fixtures

### ENERGY

- Open generatorsets
- Enclosed generatorsets
- ATS / Master systems
- Control systems
- Monitoring systems
- Turn-key projects
- Cooling systems
- Exhaust systems
- Ventilation systems
- LED Ex-proof and non Ex-proof armatures / Fixtures

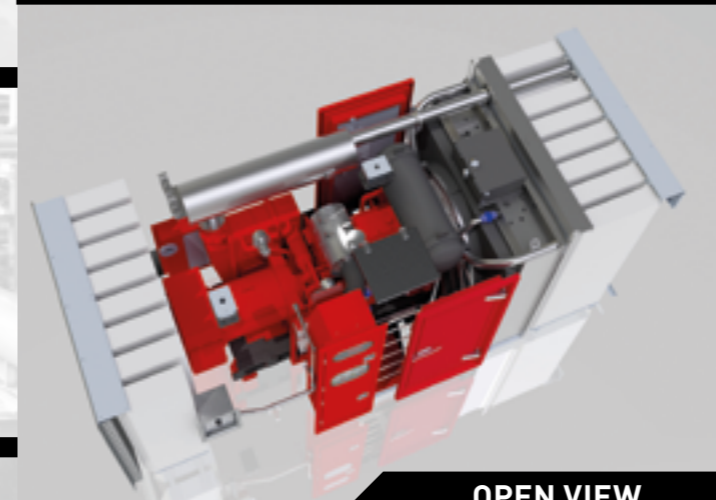
### ATEX NORSOK ZONE II 1000CFM COMPRESSOR @10 BAR DNV 2.7-2 (76 DB(A) @ 1M)



OPEN VIEW



OPEN VIEW ATEX PACKAGE

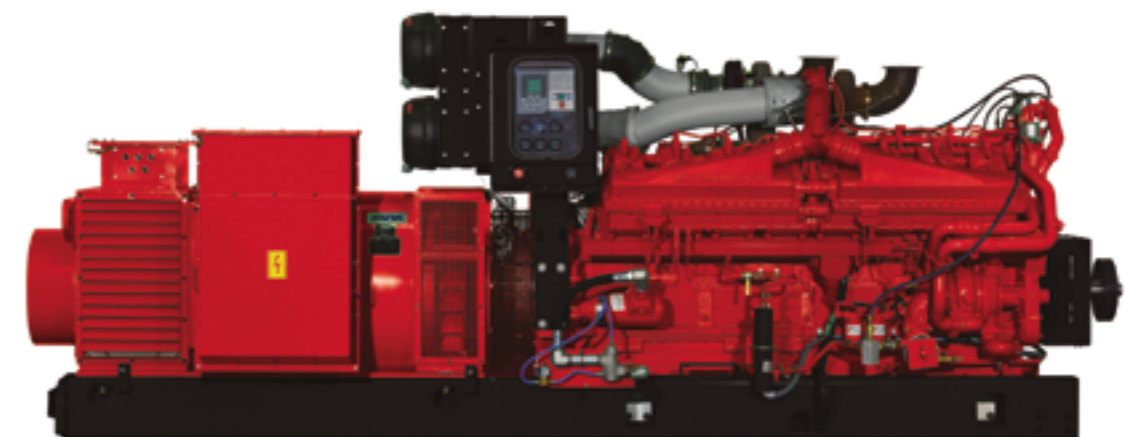


OPEN VIEW



20FT A60 ENCLOSURE

### QSK LAND-BASED DRILLING POWER MODULE





Experience & expertise. This equation provides trustness to our packing solution. Innovate without counting with the proper technical expertise, put your special projects in jeopardy. Count on our team of professionals to support you.

- Extensive expertise within our markets, including products that complies with all major environmental standards.
- High level of technical skillsets granted from a variety of solutions provided to the market.
- Capable of integrating electrical and mechanical components, even when such solution is developed from scratch.

## OUR EXPERTISE

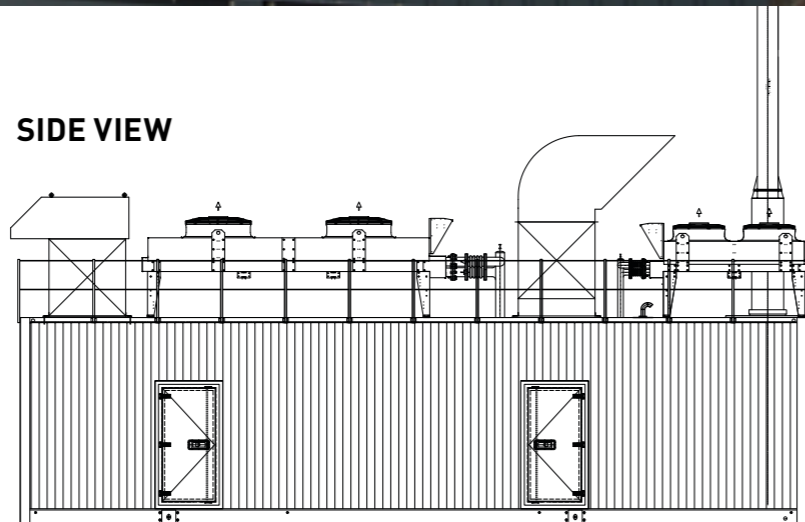
- DESIGN EXPERTISE (2D/3D)
- AIR FLOW CALCULATIONS AND VALIDATIONS
- COOLING CALCULATIONS
- VENTILATION CALCULATIONS
- NOISE & VIBRATIONS CALCULATIONS AND VALIDATIONS
- ENGINEERING EXPERTISE

### CATERPILLAR GAS GENERATOR CAT3512E-2250KVA



- Engineering and delivery of an acoustic enclosure with exhaust system & remote controller
- Noise level 55 dBA @ 10 meter
- Dimensions: L12,300\*W3,400\*H3400m
- Including SAT/FAT and full installation

SIDE VIEW



### CATERPILLAR DIESEL GENERATOR SET CAT3516 - 2250 KVA



- Engineering and delivery of an acoustic enclosure with exhaust system
- Noise level 85 dBA @ 1 meter – full flow type
- Dimensions: L11.000\*W3.000\*H3.550mm
- Including installation on site

### DATA CENTER OPERATION



- MTU20V4000 engine with Marelli generator
- 3MVA in 40ft container
- Noise Level 80 dB(A) @ 1M



Profound technical expertise in the development and integration of complex systems. Without having a comprehensive understanding of customers needs, no significant project will be successful. For that reason, our competencies starts with the capacity in not only identifying, but also comprehending your enterprise demands. Our responsibility only ends when the developed solution is installed and running.

- Exceptional expertise in developing tailored package solutions.
- Comprehensive knowledge in detailing major system calculations including muffler and noise level attenuation solutions.
- Able to present turn-key solutions. From the project specifications EPIXs4U starts detailing equipment engineering, goes into project details, manages and purchases major components, builds, tests, certifies and finally installs the equipment where it will be operate.
- Bespoke solutions including radiators, mufflers, louvers, motorized dumpers, electric driven fans and other tailored solutions.



POWERPACK

GFR LDH 45/70



### MEET THE BENEFITS

- |                            |                    |                      |
|----------------------------|--------------------|----------------------|
| • SAVE FUEL                | • TANDEM CONTROLS  | • IMPROVE RELIABILTY |
| • MORE POWER               | • MORE TRACTION    | • REDUCE COST        |
| • LESS EMISSIONS           | • SAVE CONSUMABLES | • REDUCE MAINTANANCE |
| • GET ACCURATE INFORMATION | • MORE SAFETY      | • LESS WEIGHT / AXLE |

### GE LOCO GT558 TRACTION GENERATOR

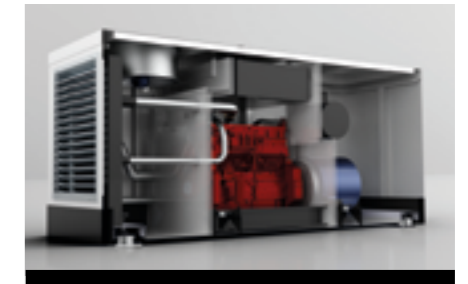
#### Our capability:

- Low noise design structure (dBa)
- Cooling compartment separate from engine room department
- Engine compartment with isolated exhaust
- Alternator compartment with combined air inlet
- Custom made bell housing design so the GE alternator can fit any engine
- Shock mount design to make sure G-forces will have no impact
- Stainless Steel Canopy for durability and ambient temperatures

#### Main advantages:

- Significant less pollution from alternator because majority of airflow via radiator compartment
- Radiator can be cleaned from both sides, easy O&M (extra saving)
- Cold air over the generator and aircleaner
- Longer intervals for pre-filters (air intake coulisse) because majority of the flow via radiator compartment (extra saving)
- Longer interval air cleaners due to design Cyclone Filter (extra saving)

### PRODUCT DETAILS: GE LOCO GT558 TRACTION GENERATOR



CONTAINER



### OUR EXPERTISE

- |   |   |
|---|---|
| • DESIGN EXPERTISE (2D/3D)              | • NOISE & VIBRATIONS CALCULATIONS AND VALIDATIONS |
| • AIR FLOW CALCULATIONS AND VALIDATIONS | • ENGINEERING EXPERTISE                           |
| • COOLING CALCULATIONS                  |   |
| • VENTILATION CALCULATIONS              |   |



# INDUSTRY

## Flexibility in selecting brands fit for market equipments

Having the flexibility in selecting engines and component brands not only expands the option spectrum, but also gives the opportunity to make the right choice, aiming in guaranteeing the efficiency and performance of such tailored solution.

EPIX4U have proven relationship with all major international brands, from all over the globe, with the objective of fulfilling customer needs. Utilizing high quality equipments, counting with a global support, manufactured to attend the highest environmental standards.

### CAT POWERPACK



### VOLVO POWERPACK



### CUMMINS POWERPACK



### DEUTZ ENGINE



AS A BRAND INDEPENDENT SPECIALIST WE DELIVER A WIDE RANGE OF POWERPACKS AND ENGINES USED IN DIFFERENT APPLICATIONS AND INDUSTRIES. THESE SOLUTIONS ARE DELIVERED FROM STAND-ALONE TO TURN-KEY PROJECTS.

# MARINE

## Wealth of experience



Since ages, mankind has been making use of all the possibilities water offers: means for transportation, harvesting of sea-food and minerals, energy, hydrocarbons, etc.

This diverse and innovated industry with its specialized market segments, has been from the start of EPIX4U at the centre of attention.

With decades of hands-on experience and a solid track record ranging, EPIX4U has chosen to focus on dedicated and custom tailored projects.

Whether your project requires input on mechanical components, e.g. environmental upgrade to your machinery park, electrical or electronic solutions or even navigation and communication solutions, EPIX4U is your partner. With specialized engineers, selected partners and thorough in-depth knowledge on the maritime rules and regulations, EPIX4U is capable to deal with all types of Marine projects.

### OUR EXPERTISE

- POWERMANAGEMENT SYSTEMS
- ELECTRICAL SYSTEM INTEGRATION
- NAVIGATION & COMMUNICATION SOLUTIONS
- REMOTE MONITORING & CONTROL SYSTEMS
- CLASSED CERTIFICATION
- PACKAGING & TESTING CAPABILITY
- DESIGN & ENGINEERING CAPABILITY
- LED SOLUTIONS



# LED MARINE

LED's make things bright

Being able to provide complete project implementation from start to finish, within the boundaries of budget and time, EPIXs4U has acted as a catalyst to our current customer base in the international cruise and ferry industry. In close cooperation with our partner LEDs4YOU, we became the recognized specialist in vessel lighting systems conversions.

With a combined track record of +40 vessels, mainly in the cruise- and ferry vessels market, we have been able to assist shipowners in a considerable reduction in emissions, fuel consumption, spares, labor, etc.

With our conversion projects, executed on vessels with an average age of approximately 8 years, we experienced that heat and age of electrical lighting systems may have a very negative effect resulting in brittle and damaged wiring, connectors, etc. These damages are usually not known or noticed by the crew and do only surface during the execution of the conversion. With our specialists, and in close cooperation with the ships staff and management, these area's of risk are taken care off

Our projects range from 5.000 to 100.000 emitters per vessels and are executed on a turn-key basis whereby we survey, analyze, report, develop and/or modify emitters, transport, install and commission the complete vessel with our own team.



LED converted bar



workstation restaurant

## BENEFITS, SAVINGS & ENVIRONMENTAL

- RETURN ON INVESTMENT (ROI): APPROXIMATELY WITHIN 1 YEAR
- HIGH ENERGY EFFICIENCY: UP TO 85% ENERGY SAVING
- ENVIRONMENTAL FRIENDLY: MUCH LESS CO<sup>2</sup> AND SULFUR EMISSIONS
- LONG LIFE: MORE THAN 50.000 HOURS
- LIMITED HEAT PRODUCTION
- NO UV AND INFRARED RADIATION

# LED HAZARDOUS ENVIRONMENT

Safety makes life brighter

EPIXs4U offers a wide range of LED Lighting products and services aimed at both industrial as hazardous (ATEX) environments. With our Global network are able to act as delivery partner or for total turn-key projects including mounting and commissioning.

## FLOODLIGHT FRONT



## FLOODLIGHT SIDE VIEW



## LINEAR LIGHTING



## LOW-MID BAY LIGHT



## LOW-MID BAY LIGHT



## LOW-MID BAY LIGHT SIDE VIEW



## PRODUCTS

- High Bay Lighting
- Low-Mid Bay Lighting
- Flood Lighting
- Linear Lighting
- Portable Lighting
- Emergency & Signal Lighting

## DESIGN FEATURES

- Unique dual / tri-chamber structures
- Excellent heat sink performance
- High reliability driver
- Compact sizes
- Different beam angles
- Latest LED technology
- Easy maintenance

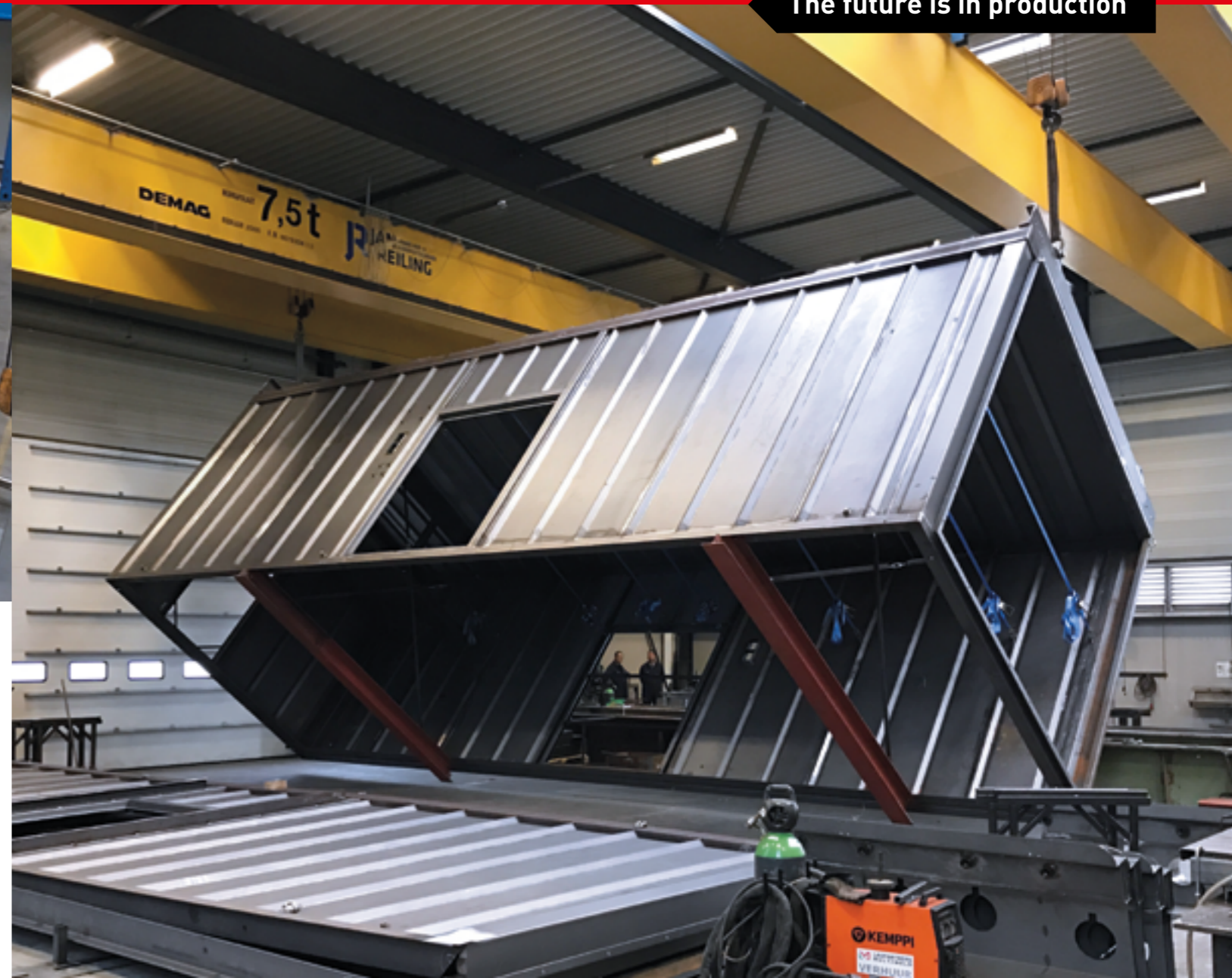
## CERTIFICATION & COMPLIANCES

- ATEX, IECEx
- UL844, UL1598(A)
- Zone 1, 2, 21, 22
- IP66
- Ambient Temp: -40C - +55C





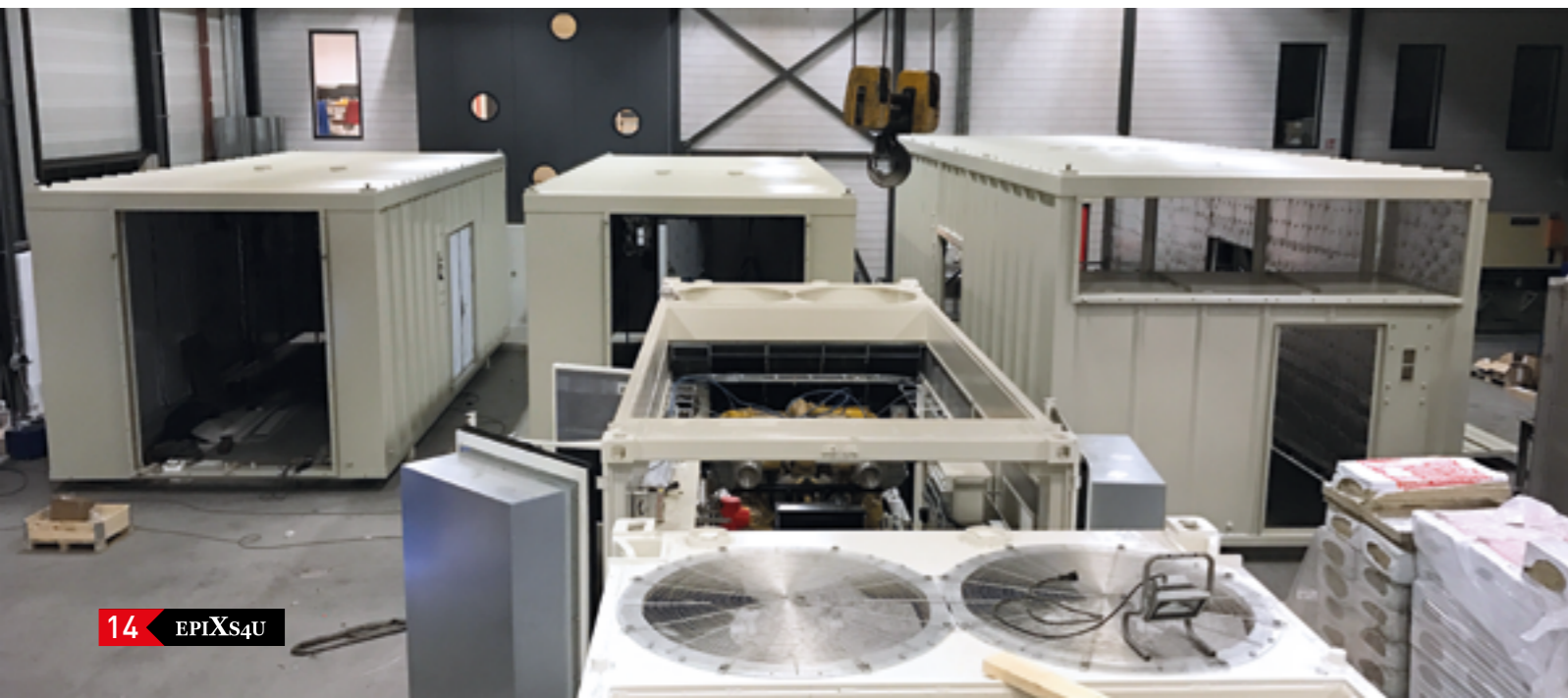
TOTAL AREA: 5000 M<sup>2</sup>  
 OUR PRODUCTION FACILITY: 2.000 M<sup>2</sup>  
 OFFICE SPACE: 750 M<sup>2</sup>  
 OVERHEAD CRANE CAPACITY: 2 X 8 TONS



EPIXS4U is a dynamic company, specialised in engineering, supplying and installing industrial exhaustgassystems for combustion engines. Equipped with all necessary fabrication machineries like cutting-, bending-, sawing- and welding machines.

Apart from choosing from an extensive programme of standard products, EPIXS4U has the experience and know-how at its disposal in order to analyse specific problems and offer suitable solutions.

Reflecting on: the necessary pipe diameter, expansion because of high temperatures, where do I install exhaust mufflers, which insulation will I apply... EPIXS4U takes all this work and responsibility from you and offers you from a complete product assortment the perfect solution for an optimally functioning exhaust system. Apart from that, it is possible to have the complete exhaust system, from engine exhaustflange to rain cap, including measuring and drawing - installed by us on location.



## NOISE REDUCTION AND VENTILATION

EPIXS4U enclosures and containers are especially used for noise reduction with regard to combustion engines and fans.

Apart from the supply of standard reconstructed / renovated ISO containers (10', 20', 30', and 40'), we also supplies units made-to-measure. In close collaboration with our customer, the enclosure or container is designed by Novetec. Extensive attention is paid to the accessibility of the genset, because of maintenance and repair activities.

Our technical employees have extensive knowledge of thermal engineering, acoustics and flowdynamics. By combining our theoretical knowledge with our own products, we can offer a well-balanced total solution. Since EPIXS4U manufactures and installs the products itself, we are capable of continuously developing and innovating our products.

## OUR COMPONENTS

- BELLOWS / FLANGES
- CLOSABLE LOUVRES
- MOTORIZED DAMPERS
- SPLITTERS
- VENTILATION SYSTEMS
- EXHAUST GAS SYTEMS
- AXIAL FANS





# INTERNATIONAL SOLUTIONS

## EPIXS4U THE NETHERLANDS

### EPIXS4U

NIEUWLAND PARC 440  
2952 DE ALBLASSERDAM  
THE NETHERLANDS

E: [INFO@EPIX4U.COM](mailto:INFO@EPIX4U.COM)  
T: +31 (0)78 2040 186  
W: [WWW.EPIXS4U.COM](http://WWW.EPIXS4U.COM)

## EPIXS4U ASIA

### JF Seom-yu®

Simply, Quality and Value

21 BUKIT BATOK CRESCENT  
#16-78 WCEGA TOWER  
SINGAPORE 658065

E: [CONTACTUS@JF-SEOMYUASIA.COM](mailto:CONTACTUS@JF-SEOMYUASIA.COM)  
W: [WWW.JF-SEOMYUASIA.COM](http://WWW.JF-SEOMYUASIA.COM)

## EPIXS4U SOUTH AMERICA

**WMS Consulting**  
Innovative Business

AVE. QUEIROZ FILHO, 1560  
SUITE 204 - ROUXINOL TOWER  
ZIP CODE 05319-000  
SAO PAULO - BRAZIL

E: [WMARCHETTI@WMSCONSULTING.COM.BR](mailto:WMARCHETTI@WMSCONSULTING.COM.BR)  
T: +55 11 98 182 4899  
W: [WWW.WMSCONSULTING.NET](http://WWW.WMSCONSULTING.NET)

